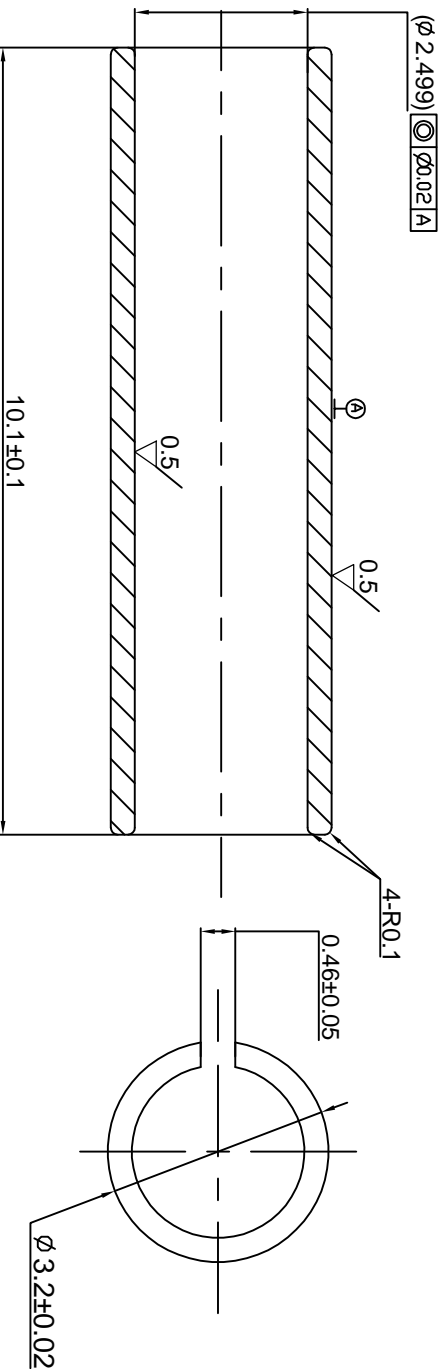


REV.	ECN. NO.	APPD.
A	ECN:20160302004	2016.03.01



NOTE:

1. 帶“ ”為重點尺寸
2. 產品材質符合RoHS及EMF0001
3. 拉拔力2~5N,檢測PIN外徑 $2.4990 \pm 0.0002$ mm, 檢測PIN對半插入
4. 插損  $\leq 0.2$ dB
5. 外觀無缺角、雜色、裂紋等異常
6. 強度  $\geq 1000$ Mpa
7. 滿足老化后1000次拉拔力、插損重複插拔要求
8. 密度  $\geq 6.0$ g/cm<sup>3</sup>

X. ± 0.1	X. <sup>o</sup> ± 0.5°	UNITS	NAME (INTENDED USE)	<b>FOXCONN</b> HONG ZHUN PRECISION TOOLING (JIN CHENG) CO., LTD	TITLE: P專案SC § 3.2L10.1開口Sleeve(WG)
.X ± 0.05	.X. <sup>o</sup> ± 0.1°	MAT'L	CUSTOMER		
.XX ± 0.01	.XX. <sup>o</sup> ± 0.05°	ZR02	PART NO. (INTENDED USE)		
.XXX ± 0.001	.XXX. <sup>o</sup> ± 0.01°	FINISH	S40-C020-31101SN-WG		
THESE DRAWINGS AND SPECIFICATIONS ARE THE PROPERTY OF HONG ZHUN PRECISION TOOLING (JIN CHENG) CO.,LTD. AND SHALL NOT BE REPRODUCED, COPIED OR USED IN ANY MANNER WITHOUT THE PRIOR WRITTEN CONSENT OF HONG ZHUN PRECISION TOOLING (JIN CHENG) CO.,LTD.		Q'TY	APPD:	DWG NO.:	S-C-FSTTZ-0001
			CHKD: 鄧軍20210222	SCALE	1:1
			DR: 張明20210222	SHEET	1
				REV.	A